

RESEARCH

Open Access

# A standardized model of brain death, donor treatment, and lung transplantation for studies on organ preservation and reconditioning

Franco Valenza<sup>1,2\*</sup>, Silvia Coppola<sup>1</sup>, Sara Froio<sup>1</sup>, Giulia Maria Ruggeri<sup>2</sup>, Jacopo Fumagalli<sup>2</sup>, Alessandro Maria Villa<sup>2</sup>, Lorenzo Rosso<sup>3</sup>, Paolo Mendogni<sup>3</sup>, Grazia Conte<sup>4</sup>, Caterina Lonati<sup>2</sup>, Andrea Carlin<sup>2</sup>, Patrizia Leonardi<sup>2</sup>, Stefano Gatti<sup>2,4,5</sup>, Nino Stocchetti<sup>1,2</sup> and Luciano Gattinoni<sup>1,2</sup>

\* Correspondence:

franco.valenza@unimi.it

<sup>1</sup>Dipartimento di Anestesia Rianimazione (Intensiva e Subintensiva) e Terapia del dolore, Fondazione IRCCS Ca' Granda-Ospedale Maggiore Policlinico, Milan 20122, Italy

<sup>2</sup>Dipartimento di Fisiopatologia Medico-Chirurgica e dei Trapianti, Università degli Studi di Milano, Milan 20122, Italy

Full list of author information is available at the end of the article

## Abstract

**Background:** We set a model of brain death, donor management, and lung transplantation for studies on lung preservation and reconditioning before transplantation.

**Methods:** Ten pigs ( $39.7 \pm 5.9$  Kg) were investigated. Five animals underwent brain death and were treated as organ donors; the lungs were then procured and cold stored (Ischemia). Five recipients underwent left lung transplantation and post-reperfusion follow-up (Graft). Cardiorespiratory and metabolic parameters were collected. Lung gene expression of cytokines (tumor necrosis factor alpha (TNF $\alpha$ ), interleukin-1 beta (IL-1 $\beta$ ), interleukin-6 (IL-6), interferon gamma (IFN $\gamma$ ), high mobility group box-1 (HMGB-1)), chemokines (chemokine CC motif ligand-2 (CCL2-MCP-1), chemokine CXC motif ligand-10 (CXCL-10), interleukin-8 (IL-8)), and endothelial activation markers (endothelin-1 (EDN-1), intercellular adhesion molecule-1 (ICAM-1), vascular cell adhesion molecule-1 (VCAM-1), selectin-E (SELE)) was assessed by real-time polymerase chain reaction (PCR).

**Results:** Tachycardia and hypertension occurred during brain death induction; cardiac output rose, systemic vascular resistance dropped ( $P < 0.05$ ), and diabetes insipidus occurred. Lung-protective ventilation strategy was applied: 9 h after brain death induction, PaO<sub>2</sub> was  $192 \pm 12$  mmHg at positive end-expiratory pressure (PEEP)  $8.0 \pm 1.8$  cmH<sub>2</sub>O and FiO<sub>2</sub> of 40%; wet-to-dry ratio (W/D) was  $5.8 \pm 0.5$ , and extravascular lung water (EVLW) was  $359 \pm 80$  mL. Procured lungs were cold-stored for  $471 \pm 24$  min (Ischemia) at the end of which W/D was  $6.1 \pm 0.9$ . Left lungs were transplanted and reperfused (warm ischemia  $98 \pm 14$  min). Six hours after controlled reperfusion, PaO<sub>2</sub> was  $192 \pm 23$  mmHg (PEEP  $8.7 \pm 1.5$  cmH<sub>2</sub>O, FiO<sub>2</sub> 40%), W/D was  $5.6 \pm 0.4$ , and EVLW was  $366 \pm 117$  mL. Levels of IL-8 rose at the end of donor management (BD,  $P < 0.05$ ); CCL2-MCP-1, IL-8, HMGB-1, and SELE were significantly altered after reperfusion (Graft,  $P < 0.05$ ).

**Conclusions:** We have set a standardized, reproducible pig model resembling the entire process of organ donation that may be used as a platform to test *in vivo* and *ex vivo* strategies of donor lung optimization before transplantation.

**Keywords:** Brain death; Tissue and organ procurement; Lung transplantation; Organ preservation/methods; Reperfusion injury; Ventilator-induced lung injury

## Background

Over several decades, lung transplantation has become a consolidated treatment modality. However, the disproportion between organ supply and demand has not been solved. Consequently, donor criteria have been progressively expanded to increase the donor pool [1,2]. In addition, new techniques such as extracorporeal lung reconditioning [3-5] that allow pharmacological [6,7], gene [8], or cell [9] therapy have been proposed. As a consequence of these novel opportunities, the concept of organ 'acceptability' has been reconsidered: organs that were previously considered unsuitable for transplantation are now well accepted [4,10-14]. However, while this extended suitability aids solving the organ shortage problem, it also raises several issues, among which the need to implement protocols of treatment in order to preserve over the donation process, if not ameliorate, the function of organs that a few years ago would not have been considered for transplantation.

The aim of this investigation was to set and characterize a pig model that closely resembles the entire process of lung donation and transplantation. Each phase of the clinical procedure, including the pathophysiological changes induced by brain death, the complexity of donor management, and lung transplantation has been carefully reproduced. Further, we have applied a lung-protective ventilatory strategy in the donor animals and during the reperfusion phase of transplantation and measured gene expression of important cytokines, chemokines and markers of endothelial activation throughout the protocol. Hereafter, we present and discuss the results of our investigation.

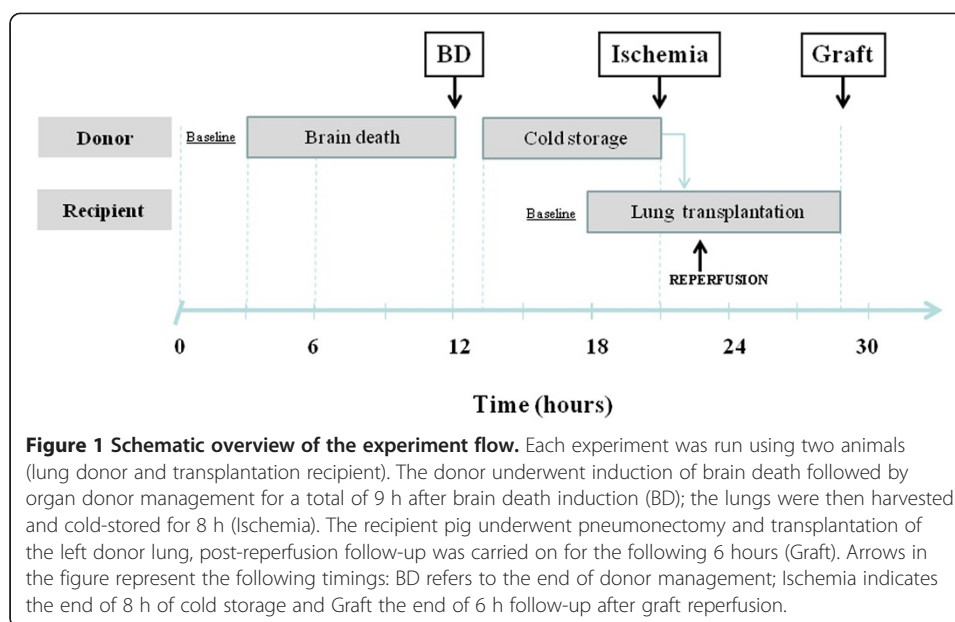
## Methods

This experimental study was performed after the Ethics Committee of the Fondazione IRCCS Ca' Granda - Ospedale Maggiore Policlinico and the Italian Ministry of Health approved the protocol (Permit Number: 05/12). All surgeries were performed under anesthesia, and all efforts were made to minimize suffering. Experiments were performed in conformity to the revised Institute of Laboratory Animal Resources, Commission on Life Sciences, National Research Council 'Guide for the Care and Use of Laboratory Animals' National Academy Press, Washington, D.C., 1996 (<http://www.nap.edu/catalog/5140.html>).

A schematic overview of the protocol is shown in Figure 1. Each experiment was run using two animals (lung donor and transplantation recipient). The donor underwent induction of brain death followed by organ donor management for a total of 9 h after brain death induction; the lungs were then harvested and cold-stored for 8 h. The recipient pig underwent pneumonectomy and transplantation of the left donor lung; post-reperfusion follow-up was carried on for the next 6 h.

## Anesthesia and monitoring

Details of anesthesia and monitoring are described in Additional file 1. Briefly, animals received an intramuscular injection of olanzapine and tiletamine 2 mg (Zoletil, VIRBAC s.r.l., Milan, Italy) and medetomidine 1 mg (Domitor, Pfizer Animal Health, Exton, PA, USA and Div. of Pfizer Inc., New York, NY, USA). A continuous intravenous infusion of propofol (Diprivan, AstraZeneca, Basiglio, Milan, Italy) 10 to 15 mg/Kg/h and medetomidine 3 to 6 µg/Kg/h was then started. A number of catheters were positioned and secured in place to measure arterial, central venous, and pulmonary artery pressure



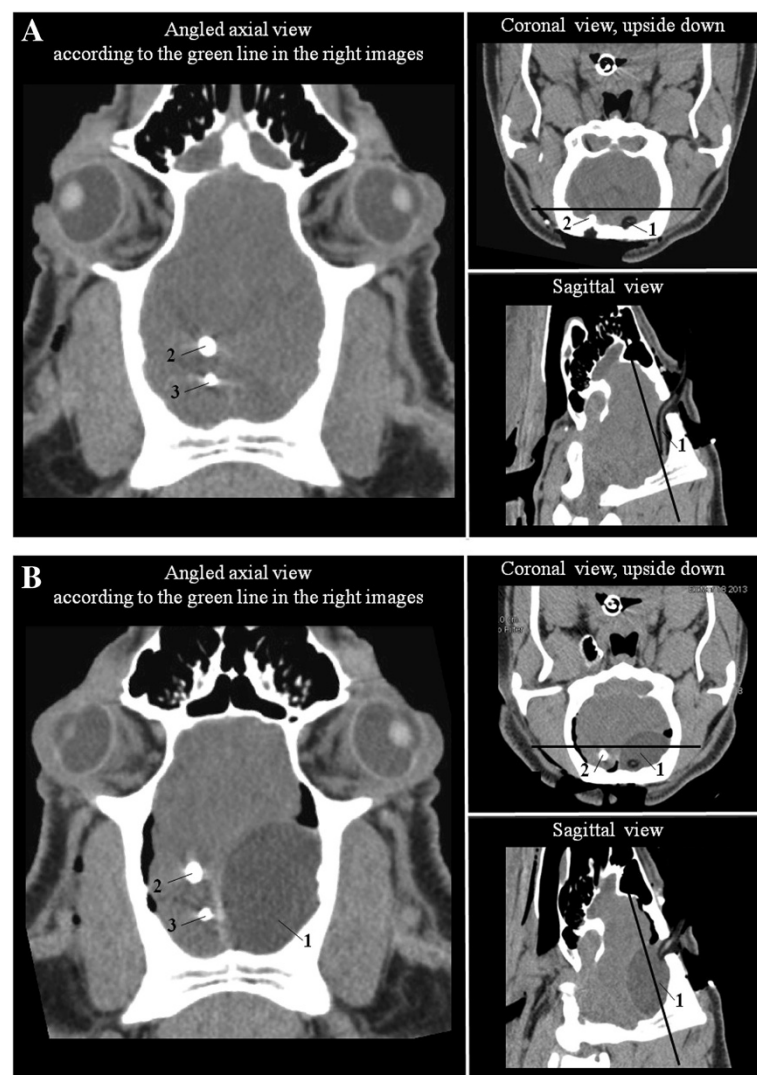
throughout brain death induction, donor treatment, recipient surgery, and follow-up. Cardiac output was measured by the Swan-Ganz catheter. Extravascular lung water (EVLW), global end diastolic volume (GEDV), and stroke volume variation (SVV) were monitored by PiCCO<sup>2</sup>® (PULSION Medical Systems, AG, Stahlgruberring 28, München, Deutschland, Germany) monitor. Analysis of pO<sub>2</sub>, pCO<sub>2</sub>, pH, and derived variables (base excess, HCO<sub>3</sub>), together with electrolytes (Na<sup>+</sup>, K<sup>+</sup>, Ca<sup>2+</sup>, Cl<sup>-</sup>), glucose, and lactate concentrations was performed on arterial and central venous samples (Radiometer ABL 800 Flex, Radiometer Medical ApS, Brønshøj, Denmark). Urinary electrolytes concentrations were measured by K.I.N.G.® (Orvim s.r.l., Paderno Dugnano, Milan, Italy). Blood chemistry (blood urea nitrogen (BUN), creatinine, serum glutamic oxaloacetic transaminase (SGOT), serum glutamic-pyruvic transaminase (SGPT), troponin T) was also assessed at baseline and at the end of donor management (BD).

#### Induction of brain death

To induce brain death, a slight modification of the protocol described by Purins et al. was used [15]. Briefly, to rise intracranial pressure (ICP), an 18-Fr Foley catheter (Willy Rush AG, Kernen, Germany) was placed in the epidural space and progressively inflated with saline (1.5 mL every 10 min). ICP was continuously measured by connecting a subdural probe (Integra Neurosciences, TraumaCath, Enterprise Drive, Plainsboro, NJ, USA) to a pressure transducer (TruWave, Edwards Lifesciences LLC, Irvine, CA, USA). The balloon of the Foley catheter was inflated until cerebral perfusion pressure, calculated as mean arterial pressure (MAP) minus ICP ( $CPP = MAP - ICP$ ), was less than 0 mmHg. At each step of inflation, the microballoon of a 5-Fr pulmonary arterial catheter (Edwards Lifesciences LLC) positioned intraparenchymally was inflated with 1 mL of air; the maneuver was used to calculate intracranial compliance ( $IC = 1/\Delta ICP$ ). Once CPP was negative, muscle paralysis, anesthesia, and analgesia were discontinued. Brain death was confirmed at the end of 60 min of  $CPP < 0$  mmHg and before lung retrieval.

Clinical signs of brain death included the absence of corneal reflex and the absence of coughing in response to tracheal suctioning. An apnea test was also performed. This was conducted during continuous positive airway pressure verifying the absence of breathing, confirmed by the absence of esophageal pressure deflections (SmartCath Viasys, Palm Springs, CA, USA) while  $p\text{CO}_2$  was above 60 mmHg (verified by arterial blood gas analysis). In three animals, brain death was also confirmed by electroencephalography (B. E. Light, EBNeuro S.p.A., Florence, Italy) [16]. In these animals, monitoring was extended throughout the protocol procedure, from before brain death induction to the end of brain death donor management.

An exemplificative CT scan shows the position of the intracranial catheters and the cerebral parenchyma deformation before and after the inflation of the epidural Foley catheter (Figure 2). A representative diagram of the site of brain catheter placement (Additional file 2: Figure S1), a radiograph of the epidural Foley catheter once



**Figure 2** CT scan analysis of the skull at baseline (A) and after brain death induction (B) in one exemplificative animal. 1, epidural Foley catheter; 2, ICP monitoring catheter; 3, intraparenchymal Swan-Ganz catheter for measuring intracranial compliance.

inflated in the pig cranium (Additional file 3: Figure S2), and a photograph showing brain to inflated balloon proportions (Additional file 4: Figure S3) can be found in the Additional files.

#### **Organ donor management**

After brain death was confirmed, donor animals were treated according to standard physiological targets for the next 6 h [17,18]. Cardiovascular targets included MAP > 60 mmHg, central venous pressure (CVP) between 5 and 8 mmHg and urine output > 1.5 mL/Kg/h. Hypotension was treated with vasoactive drugs when hemodynamic instability persisted despite adequate volume resuscitation. Norepinephrine was the first choice drug when systemic vascular resistances were below 800 dyn · s · cm<sup>-5</sup>. 1-Desamino-8-D-arginine vasopressin (0.125 to 0.250 µg endovenous) was given when diabetes insipidus occurred, defined as urine output > 4 mL/Kg/h, urinary specific gravity < 1.005, and blood osmolarity > 300 mOsm/Kg, calculated as  $[2 \times \text{Na}] + [\text{glucose}/18]$ . We decided to use methylprednisolone by protocol (15 mg/kg) but not thyroid hormones as their use is suggested only when hemodynamic instability persists despite aggressive treatment [19-22]. After brain death confirmation, mechanical ventilation was set according to a lung-protective ventilatory strategy [18,23]: tidal volumes of 6 to 8 mL/Kg, positive end-expiratory pressure (PEEP) of 8 to 10 cmH<sub>2</sub>O, and respiratory rate set to maintain pCO<sub>2</sub> lower than 50 mmHg with 7.35 < pH < 7.45. Recruitment maneuvers were performed at the end of each apnea test allowing ten consecutive breaths with an inspiratory pressure target of 40 cmH<sub>2</sub>O above PEEP of 5 cmH<sub>2</sub>O.

#### **Lung harvest and cold storage**

A median sternotomy was performed, the thymus removed, the pleura carefully dissected, and the pericardium opened. The superior and inferior cava veins were encircled with silk ties and a bolus of 20,000 U heparin (Pharepa, Pharmatex Italia s. r.l., Milan, Italy) was injected into the jugular vein. Five minutes after the heparin bolus, a cannula was inserted into the main pulmonary artery. A bolus of 250 µg of alprostadil (Prostin, Pfizer Manufacturing Belgium N.V., Puurs, Belgium) was then injected into the main pulmonary artery. The superior and inferior cava veins were then ligated, the ascending aorta clamped, and the left atrial appendage transected. The lungs were then flushed with 60 ml/Kg of cold Perfadex® (Vitrolife Sweden Instruments AB, Billdal, Sweden) at a height of 30 cm above the heart. During the perfusion with the preservation solution, respiratory rate was decreased and FiO<sub>2</sub> increased to 100%. Ventilation was discontinued when the heart-lung block was removed. Just before removing the lungs, the trachea was clamped with lungs fully inflated. After removal from the thoracic cavity, the heart-lung block was placed on ice, the heart removed and the lung perfused with Perfadex® in a retrograde manner (i.e., from the left veins to the pulmonary artery). Thereafter, the lungs were placed in a plastic bag (Vitrolife) containing Perfadex® solution and stored on ice for 8 h while continuously monitoring lung surface temperature (Medical Temperature Probes, Siemens S.p.A., Milan, Italy).

#### **Lung transplantation**

A detailed description of the surgical procedure of lung transplantation is reported in Additional file 1. Briefly, the recipient pig was placed in the right lateral decubitus

position, a left thoracotomy performed just below the tip of the scapula, and a left pneumonectomy completed. The donor lung was prepared on the back table while on ice then transferred to the thoracic cavity, and bronchial, pulmonary artery, and venous anastomoses were performed. The atrial clamp was then released to de-air the donor lung in a retrograde manner. Thereafter, the artery clamp was opened step by step in 10 min; the bronchial clamp was then removed allowing left lung ventilation.

Ventilation protocol was as follows: during pneumonectomy tidal volume was set at 6 to 8 mL/Kg, PEEP at 5 cmH<sub>2</sub>O, and FiO<sub>2</sub> at 40%. By protocol, increments of PEEP were allowed if PaO<sub>2</sub> was <100 mmHg or SpO<sub>2</sub> <95%. After reperfusion, pressure-controlled mode was instituted maintaining the same target volume of 6 to 8 mL/Kg; PEEP was set at 8 cmH<sub>2</sub>O, and a recruitment maneuver was performed (total target pressure of 45 cmH<sub>2</sub>O) 45 min after the start of controlled reperfusion. During post-reperfusion follow-up, if SpO<sub>2</sub> was <90%, increments of PEEP were allowed up to 15 cmH<sub>2</sub>O; thereafter, FiO<sub>2</sub> had to be increased in case of persistent hypoxia. Respiratory rate was set to maintain pCO<sub>2</sub> below 70 mmHg and/or pH >7.25. In case of persistent hypercapnia, increases of tidal volume were allowed. Cardiovascular targets included MAP > 60 mmHg, CVP between 5 and 8 mmHg, and urine output > 1.5 mL/Kg/h; care was given to administer the least amount of fluid possible. Cardiovascular, respiratory, and metabolic parameters were collected throughout reperfusion and post-reperfusion follow-up.

#### **Assessment of lung function and gene expression**

Oxygenation was assessed measuring partial pressure of oxygen from peripheral arterial blood samples (PaO<sub>2</sub>) and calculating the oxygenation index (OI) as (FiO<sub>2</sub> × Paw<sub>m</sub>)/PaO<sub>2</sub>, where Paw<sub>m</sub> is mean airway pressure. The physiologic dead space fraction (VD/VT) was computed according to the following formula: VD/VT = (PaCO<sub>2</sub> - PECO<sub>2</sub>)/PaCO<sub>2</sub>, where PECO<sub>2</sub> is the mixed expired carbon dioxide partial pressure obtained by means of expiratory air sampling [24]. EtCO<sub>2</sub>/PaCO<sub>2</sub> was also calculated. Respiratory mechanics was assessed partitioning lung and chest wall components by means of an esophageal balloon catheter, as detailed in the Additional file 1. End-expiratory lung volume (EELV) was measured using the closed circuit helium technique [25]. As index of lung edema, EVLW and wet-to-dry lung ratio (W/D) were measured according to standard procedures (see Additional file 1). Transcriptional expression of tumor necrosis factor alpha (TNFα), interleukin-1 beta (IL-1β), interleukin-6 (IL-6), interferon gamma (IFNγ), high mobility group box-1 (HMGB-1), chemokine CC motif ligand-2 (CCL2-MCP-1), chemokine CXC motif ligand-10 (CXCL-10), interleukin-8 (IL-8), endothelin-1 (EDN-1), intercellular adhesion molecule-1 (ICAM-1), vascular cell adhesion molecule-1 (VCAM-1), and selectin-E (SELE) was evaluated by real-time reverse transcription polymerase chain reaction (PCR) analysis performed on total mRNA isolated from lung tissue samples [26,27]. A detailed description of the technique of mRNA isolation and gene expression measurement may be found in the Additional file 1.

#### **Statistical analysis**

All results are presented as mean ± standard deviation (SD), unless otherwise specified. Continuous variables referring to neurological, cardiovascular, respiratory, and metabolic function were analyzed within donor or recipient animals by ANOVA for

repeated measures followed, were appropriate, by Bonferroni test for all pairwise multiple comparisons. Data that were not normally distributed were investigated by ANOVA on ranks followed by Dunn's test for all pairwise comparisons. Parameters of lung function ( $\text{PaO}_2/\text{FiO}_2$ , OI, VD/VT, EELV, EVLW,  $\text{EtCO}_2/\text{PaCO}_2$ ) taken before (baseline) and after BD and after lung transplantation (Graft) were assessed by means of ANOVA. The gene expression of lung biomarkers and W/D ratio were investigated at the end of BD, after 8 h of cold storage (Ischemia) and at the end of reperfusion follow-up (Graft) by one-way ANOVA and compared to controls (Control). For this purpose, three sham operated pigs were considered.  $P < 0.05$  was accepted as significant. Data were analyzed using Sigma Plot version 11.0 (Systat Software, Inc., GmbH, Munich, Germany).

## Results

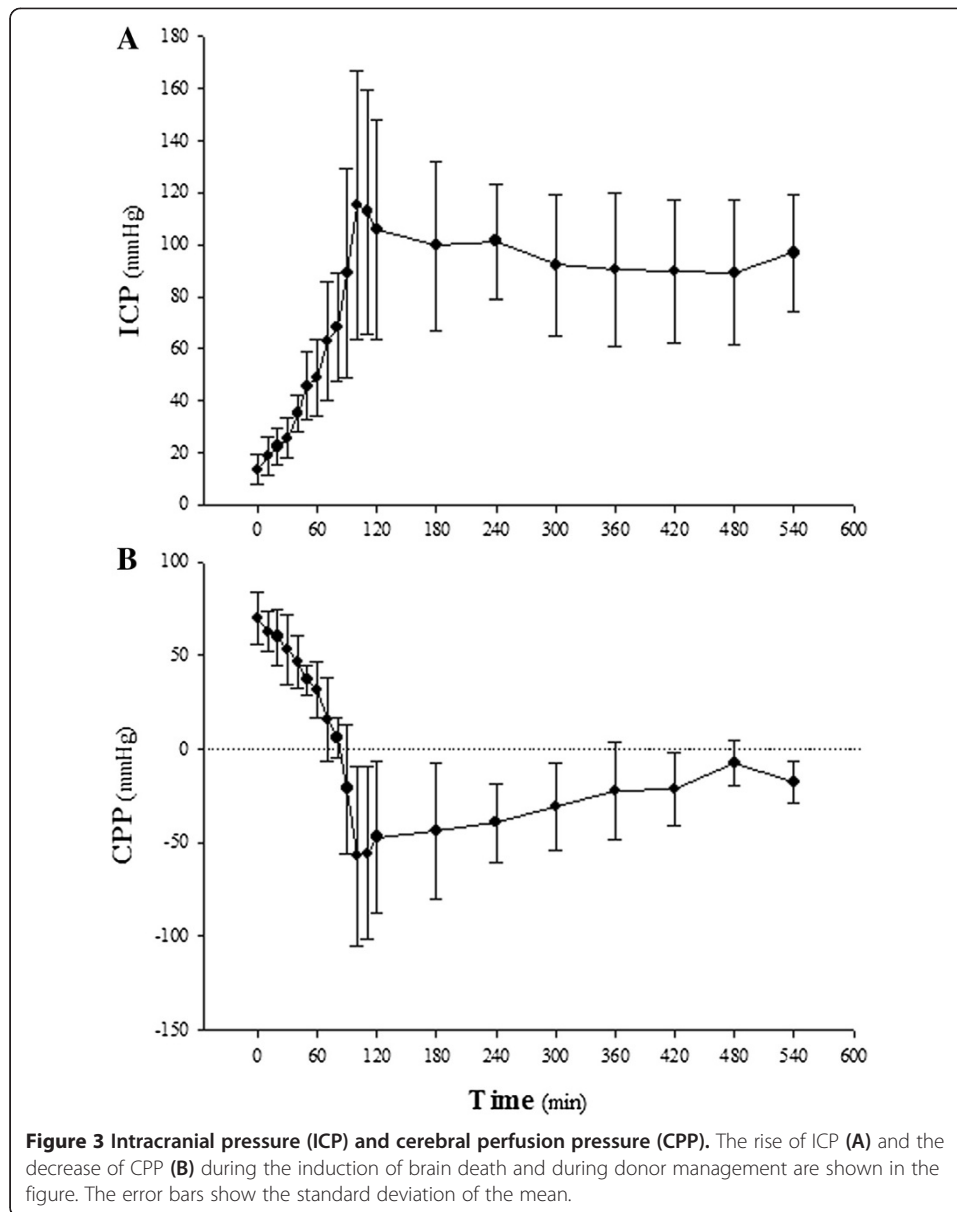
A total of ten domestic pigs (five donors and five recipients) were consecutively included in the study and investigated as described in Figure 1. Three additional sham-operated animals were included and their lungs used as controls.

### Induction of brain death and donor management

As shown in Figure 2, the inflation of the Foley catheter caused supratentorial mass expansion that caused an increase in ICP (Figure 3A) and a decrease in CPP (Figure 3B). Intracranial compliance significantly dropped from  $0.24 \pm 0.13$  to  $0.02 \pm 0.01$  mL/mmHg ( $P < 0.05$ ). When CPP was close to zero, transient hypertension and sustained tachycardia occurred, followed by severe hypotension (Figure 4). In all donor animals, clinical signs confirmed brain death at the end of brain death induction and throughout donor management. A representative pattern of electroencephalographic activity before and after brain death induction is shown in Additional file 5: Figure S4.

Cardiovascular, respiratory, and metabolic parameters collected during the hours of donor management are shown in Table 1. Over time, cardiac output significantly rose ( $P < 0.05$ ) and ( $P < 0.05$ ). Volume load (average  $8 \pm 4$  mL/Kg/h) and noradrenaline infusion (average  $0.04 \pm 0.02$   $\mu\text{g}/\text{Kg}/\text{min}$ ) were necessary in all animals. Central venous pressure slightly rose over time ( $P < 0.05$ ); stroke volume variation was always within normal ranges. Lactate rose by the end of donor management ( $P < 0.05$ ). Atrial fibrillation occurred in three pigs: infusion of amiodarone (150 mg in 250 mL dextrose 5% over a period of 20 to 30 min through a central venous catheter) decreased ventricular rate but did not revert to sinus rhythm. Clear signs of diabetes insipidus occurred in four out of five cases and were treated with 1-desamino-8-D-arginine vasopressin (1 to 3  $\mu\text{g}$ ) [28]. The lung-protective ventilatory strategy set after brain death confirmation resulted in a higher PEEP level ( $P < 0.05$ ), lower tidal volume ( $P < 0.05$ ), and higher respiratory rate ( $P < 0.05$ );  $\text{PaCO}_2$  and pH were not significantly different from baseline, while  $\text{EtCO}_2$  was higher ( $P < 0.05$ ). Insulin administration was necessary to maintain blood concentrations of glucose to levels that were similar to baseline throughout the donor management protocol. Hypernatremia developed over time ( $P < 0.05$ ) and was associated with a lower concentration of sodium in the collected urine ( $P < 0.05$ ).

At the end of donor management, hepatic enzymes were not significantly different from baseline (SGOT  $41.4 \pm 22$  vs.  $151.2 \pm 130.2$  U/L,  $P = 0.145$ ; SGPT  $52.9 \pm 10.1$  vs.  $38.2 \pm 14.2$

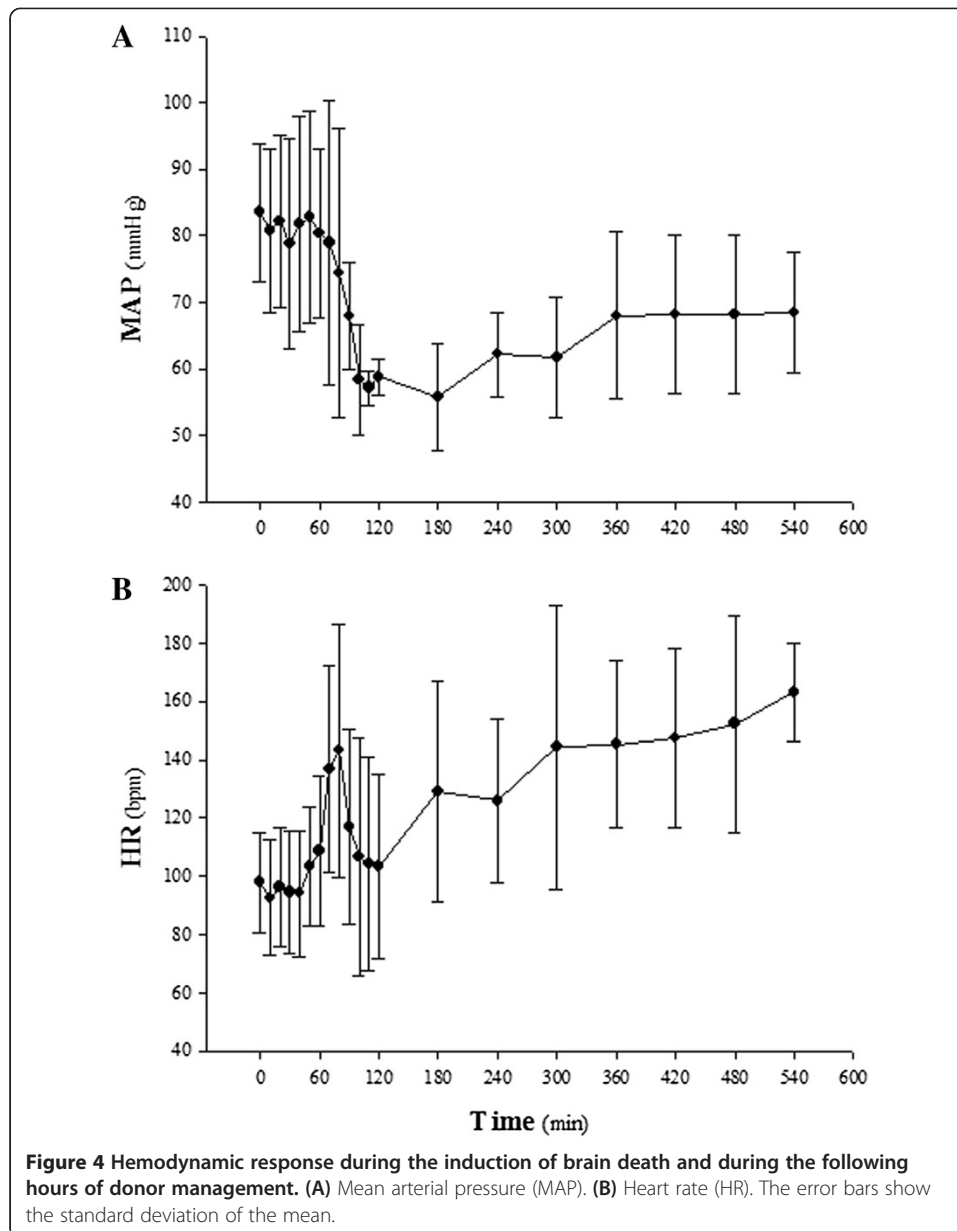


U/L,  $P = 0.124$ ); creatinine and BUN were slightly but significantly higher (creatinine  $1.1 \pm 0.1$  vs.  $1.5 \pm 0.2$  mg/dL,  $P < 0.05$ ; BUN  $14.2 \pm 2.2$  vs.  $36.5 \pm 5.26$  mg/dL,  $P < 0.05$ ); there was a trend towards a rise of cardiac troponin T ( $10.5 \pm 10.8$  vs.  $31.6 \pm 15.2$  pg/mL,  $P = 0.082$ ).

#### Lung harvest, preservation, and transplantation

There were no complications concomitant to lung perfusion, harvest, and back table surgery. Temperature of the graft was always below  $8^{\circ}\text{C}$  during cold preservation. Time from cross clamp to reperfusion was  $569 \pm 28$  min, of which  $470 \pm 24$  min of cold and  $98 \pm 14$  min of warm ischemia, respectively. Surgery was accomplished without major complications. Respiratory and hemodynamic data in the recipient are shown in Table 2; the data referring to the controlled reperfusion are shown in Additional file 6: Table S1 of the supplement material. Positive end-expiratory pressure was increased over time after reperfusion ( $P < 0.05$ ).





**Figure 4** Hemodynamic response during the induction of brain death and during the following hours of donor management. (A) Mean arterial pressure (MAP). (B) Heart rate (HR). The error bars show the standard deviation of the mean.

Mean arterial pressure and cardiac output progressively dropped (both  $P < 0.05$ ). Lactate did not change over time, and no signs of inadequate perfusion were present.

#### Assessment of lung function and gene expression

Table 3 shows functional respiratory parameters in the donor and recipient animals. The ratio between  $\text{EtCO}_2$  and  $\text{PaCO}_2$ , elastance of the respiratory system, EELV and functional dead space were not significantly different at BD or at Graft. There were no signs of lung edema in either BD or Graft, as assessed by EVLW and W/D lung ratio. In three cases, oxygenation of the implanted lung (Graft) was assessed after reperfusion by selective left pulmonary vein and artery blood gas analysis: arterial  $\text{PaO}_2/\text{FiO}_2$  was  $532 \pm 19$  mmHg with  $\text{PvO}_2$  of  $34 \pm 5$  mmHg.

**Table 1 Donor parameters**

	Baseline	Brain death diagnosis	Treatment	Procurement	P value
Temperature, °C	36.3 ± 0.9	37.7 ± 1.3 <sup>a</sup>	37.9 ± 1.2 <sup>a</sup>	38.2 ± 0.7 <sup>a</sup>	<0.05
Heart rate, beats/min	100 ± 20	129 ± 38 <sup>a</sup>	145 ± 28 <sup>a</sup>	163 ± 17 <sup>ab</sup>	<0.05
Mean arterial pressure, mmHg	75 ± 10	56 ± 8	68 ± 13	75 ± 10	<0.05*
Pulmonary artery pressure, mmHg	18 ± 3	21 ± 4	19 ± 4	21 ± 4	0.100
Wedge pressure, mmHg	11 ± 3	13 ± 3	14 ± 1	13 ± 2	0.392
Central venous pressure, mmHg	5 ± 3	7 ± 3	7 ± 3	8 ± 3 <sup>a</sup>	<0.05
Cardiac output, L/min	2.9 ± 0.2	3.5 ± 0.6	4.4 ± 1.1 <sup>a</sup>	5.1 ± 0.8 <sup>ab</sup>	<0.05
Systemic vascular resistance, dyn · s · cm <sup>-5</sup>	1,900 ± 269	1,146 ± 187 <sup>a</sup>	1,127 ± 156 <sup>a</sup>	1,051 ± 177 <sup>a</sup>	<0.05
Pulmonary vascular resistance, dyn · s · cm <sup>-5</sup>	195 ± 119	180 ± 65	100 ± 87	134 ± 79	0.103
Stroke volume variation, %	9 ± 2	10 ± 3	12 ± 5	11 ± 4	0.326
Global end diastolic volume, mL	360 ± 53	361 ± 76	394 ± 74	416 ± 108	0.564
Fluid balance, mL	-507 ± 1,249	201 ± 1,360	399 ± 1,396	350 ± 1,707	0.136
Urine output, mL/Kg/h	5.2 ± 1.8	3.1 ± 0.6	8.3 ± 12.5	7.8 ± 5.2	0.521
Lactate, mmol/L	1.7 ± 0.5	2.1 ± 0.8	2.5 ± 2.3	4.8 ± 1.8	<0.05*
Oxygen delivery, mL/min	282 ± 31	285 ± 65	411 ± 95	483 ± 113 <sup>ab</sup>	<0.05
Respiratory rate, breaths/min	14 ± 3	17 ± 2 <sup>a</sup>	19 ± 3 <sup>a</sup>	19 ± 3 <sup>ab</sup>	<0.05
Tidal volume, mL	328 ± 50	284 ± 30 <sup>a</sup>	286 ± 23 <sup>a</sup>	288 ± 21 <sup>a</sup>	<0.05
Peak airway pressure, cmH <sub>2</sub> O	17 ± 1	19 ± 1	22 ± 2 <sup>a</sup>	23 ± 2 <sup>ab</sup>	<0.05
Plateau airway pressure, cmH <sub>2</sub> O	12 ± 1	13 ± 1	14 ± 1	14 ± 1	0.061
Mean airway pressure, cmH <sub>2</sub> O	8 ± 0	11 ± 0 <sup>a</sup>	12 ± 1 <sup>a</sup>	12 ± 2 <sup>a</sup>	<0.05
Positive end-expiratory pressure, cmH <sub>2</sub> O	5 ± 0	7 ± 1 <sup>a</sup>	8 ± 2 <sup>a</sup>	8 ± 2 <sup>a</sup>	<0.05
End-tidal CO <sub>2</sub> , mmHg	43.0 ± 7.6	48.5 ± 6.4	48.9 ± 4.6	51.3 ± 2.8 <sup>a</sup>	<0.05
PaCO <sub>2</sub> , mmHg	40.5 ± 5.7	45.6 ± 3.2	43.6 ± 2.5	45.6 ± 5.2	0.168
pH	7.429 ± 0.036	7.411 ± 0.046	7.402 ± 0.057	7.358 ± 0.057	0.127
Glucose, g/dL	169 ± 56	147 ± 45	160 ± 82	162 ± 55	0.472
Na <sup>+</sup> , mEq/L	137.0 ± 4.3	137.6 ± 6.1	141.2 ± 4.1	144.2 ± 5.3 <sup>ab</sup>	<0.05
K <sup>+</sup> , mEq/L	4.2 ± 0.5	4.5 ± 0.5	4.2 ± 0.3	4.0 ± 0.1	0.375
Ca <sup>++</sup> , mEq/L	1.26 ± 0.01	1.18 ± 0.09	1.19 ± 0.06	1.17 ± 0.04 <sup>a</sup>	<0.05
Cl <sup>-</sup> , mEq/L	99.6 ± 2.5	98.6 ± 3.5	101.4 ± 2.9	106.0 ± 5.0 <sup>abc</sup>	<0.05
Na <sup>+</sup> <sub>urinary</sub> , mEq/L	64.3 ± 20.4	60.8 ± 31.7	19.7 ± 18.2	7.3 ± 7.3 <sup>ab</sup>	<0.05
K <sup>+</sup> <sub>urinary</sub> , mEq/L	29.5 ± 7.3	53.7 ± 23.2	23.2 ± 19.6	6.4 ± 3.3 <sup>b</sup>	<0.05
pH <sub>urinary</sub>	6.610 ± 0.320	6.821 ± 0.132	6.741 ± 0.631	6.229 ± 0.512	0.182
Specific gravity <sub>urinary</sub>	1.016 ± 2.5	1.011 ± 2.8	1.005 ± 0.0	1.006 ± 7.6 <sup>a</sup>	<0.05

Table 1 shows respiratory, hemodynamic, and metabolic parameters and urinary electrolytes of donor pigs collected at the end of surgery (baseline), after the induction and diagnosis of brain death (brain death diagnosis), 3 h after brain death confirmation (treatment), and at procurement (procurement, 9 h after brain death induction). Data are presented as mean ± standard deviation. One-way ANOVA repeated measures. *P* < 0.05 accepted as significant: <sup>a</sup>vs. Baseline, <sup>b</sup>vs. Brain Death, and <sup>c</sup>vs. 3 h. \**P* < 0.05: When we tested the differences of main arterial pressure between the time points considered, a statistically significant difference was found (*P* < 0.05). To isolate the group or groups that differ from the others, a multiple comparison procedure was used (Bonferroni *t* test). The statistical software we used (Sigma Stat) is such that when no significant difference is found between the two groups with the higher difference of mean values, a result of 'Do Not Test' is provided by Bonferroni *t* test for the all other enclosed comparison. A 'Do Not Test' should be treated as if there is no significant difference between the means, even though the ANOVA test indicates that this is the case. This apparent discrepancy is due to the fact that differences are close to significance (*P* = 0.06) but below threshold (set at 0.05). This result may therefore be considered only as a nonsignificant trend.

**Table 2 Recipient parameters**

	Baseline	Reperfusion	1 h	4 h	6 h	P value
Temperature, °C	37.2 ± 0.8	37.9 ± 0.6	38.0 ± 0.9	37.9 ± 1.2	38.2 ± 1.2	0.153
Heart rate, beats/min	102 ± 24	103 ± 24	102 ± 28	105 ± 19	104 ± 4	0.891
Mean arterial pressure, mmHg	114 ± 19	99 ± 20	91 ± 21	80 ± 6 <sup>a</sup>	76 ± 10 <sup>a</sup>	<0.05
Pulmonary artery pressure, mmHg	23 ± 5	25 ± 4	25 ± 3	24 ± 4	26 ± 4	0.424
Central venous pressure, mmHg	9 ± 4	6 ± 2	8 ± 3	8 ± 1	9 ± 2	0.105
Cardiac output, L/min	3.6 ± 0.4	4.2 ± 1.2	3.3 ± 0.4	3.3 ± 0.7	3.1 ± 0.6 <sup>b</sup>	<0.05
Systemic vascular resistance, dyn · s · cm <sup>-5</sup>	2,433 ± 396	1,877 ± 681	2,101 ± 763	1,787 ± 427	1,766 ± 407	0.183
Stroke volume variation, %	10 ± 4	6 ± 2	6 ± 1	9 ± 5	9 ± 4	0.385
Global end diastolic volume, mL	464 ± 57	436 ± 134	386 ± 51	456 ± 115	414 ± 109	0.890
Urine output, mL · Kg/h	4.3 ± 3.0	3.1 ± 0.7	4.9 ± 3.0	3.6 ± 2.2	2.0 ± 0.7	0.104
Lactate, mmol/L	1.2 ± 0.4	0.7 ± 0.1	1.0 ± 0.6	0.8 ± 0.2	0.8 ± 0.1	0.382
Oxygen delivery, mL/min	473 ± 65	628 ± 199	459 ± 61	428 ± 90 <sup>b</sup>	385 ± 81 <sup>b</sup>	<0.05
Respiratory rate, breaths/min	18 ± 0	19 ± 4	19 ± 2	17 ± 4	17 ± 4	0.825
Tidal volume, mL	331 ± 47	295 ± 42	321 ± 99	363 ± 136	343 ± 116	0.393
Peak airway pressure, cmH <sub>2</sub> O	17 ± 1	20 ± 5	20 ± 3	21 ± 4	22 ± 5	0.157
Plateau airway pressure, cmH <sub>2</sub> O	11 ± 1	12 ± 2	15 ± 0	17 ± 3 <sup>a</sup>	16 ± 4	<0.05
Mean airway pressure, cmH <sub>2</sub> O	8 ± 0	9 ± 1	12 ± 2 <sup>ab</sup>	13 ± 2 <sup>ab</sup>	12 ± 2 <sup>ab</sup>	<0.05
Positive end-expiratory pressure, cmH <sub>2</sub> O	5 ± 0	6 ± 2	8 ± 1 <sup>ab</sup>	9 ± 1 <sup>ab</sup>	9 ± 2 <sup>ab</sup>	<0.05
End-tidal CO <sub>2</sub> , mmHg	47.7 ± 5.2	55.4 ± 7.2	56.6 ± 4.5	49.0 ± 8.7	52.5 ± 6.2	0.096
PaCO <sub>2</sub> , mmHg	46.6 ± 5.2	52.0 ± 5.0	51.6 ± 8.4	41.2 ± 6.7	49.0 ± 11.3	0.053
pH	7.399 ± 0.029	7.349 ± 0.054	7.383 ± 0.057	7.456 ± 0.060 <sup>b</sup>	7.403 ± 0.086	<0.05
Glucose, g/dL	161 ± 52	134 ± 70	112 ± 59	119 ± 32	124 ± 24	0.168
Na <sup>+</sup> , mEq/L	138.2 ± 0.8	140.3 ± 4.0	141.8 ± 3.5	140.2 ± 4.6	140.7 ± 4.5	0.226
K <sup>+</sup> , mEq/L	3.8 ± 0.1	4.7 ± 0.3	4.8 ± 0.8 <sup>a</sup>	5.3 ± 0.7 <sup>a</sup>	5.1 ± 0.7 <sup>a</sup>	<0.05
Ca <sup>++</sup> , mEq/L	1.32 ± 0.07	1.20 ± 0.06 <sup>b</sup>	1.23 ± 0.07 <sup>a</sup>	1.16 ± 0.08 <sup>abc</sup>	1.15 ± 0.07 <sup>abc</sup>	<0.05
Cl <sup>-</sup> , mEq/L	98.8 ± 3.6	99.3 ± 2.1	101.0 ± 3.5	101.0 ± 3.7	101.0 ± 5.4	0.829
Na <sup>+</sup> <sub>urinary</sub> , mEq/L	49.4 ± 19.9	-	-	60.5 ± 40.3	-	0.475
K <sup>+</sup> <sub>urinary</sub> , mEq/L	38.1 ± 21.4	-	-	95.9 ± 46.8	-	0.053
pH <sub>urinary</sub>	6.801 ± 0.843	-	-	6.702 ± 0.978	-	0.875

Table 2 shows respiratory, hemodynamic, and metabolic parameters and urinary electrolytes of recipient pigs collected after surgery (Baseline), at the beginning of reperfusion (Reperfusion) and after 1, 4, and 6 h after reperfusion. Data are presented as mean ± standard deviation. One-way ANOVA repeated measures.  $P < 0.05$  accepted as significant: <sup>a</sup>vs. Baseline, <sup>b</sup>vs. Reperfusion, and <sup>c</sup>vs. 1 h.

Figure 5 shows results of gene expression analysis in lung samples obtained at control, BD, cold ischemia (Ischemia) and after transplantation (Graft). Expression levels of the cytokines TNF  $\alpha$ , IL-1 $\beta$ , IL-6, and IFN  $\gamma$  were not significantly different from control expression at any of the examined points (panel A). Increased expression of the chemokines CCL2-MCP-1 at Graft ( $P < 0.05$ ) and IL-8 at both BD and Graft ( $P < 0.05$ ) was observed (panel B). CXCL-10 was not altered at either BD, Ischemia, or Graft, whereas expression of HMGB-1 was significantly lower at Graft ( $P < 0.05$ , panel B). Adhesion molecules EDN-1, ICAM-1, and VCAM-1 were not affected by either BD,

**Table 3 Lung function parameters**

	Donor		Recipient	P value
	Baseline	Before procurement	After reperfusion	
PaO <sub>2</sub> /FiO <sub>2</sub> , mmHg	540 ± 32	480 ± 31	532 ± 19	0.564
Elastance of respiratory system, cmH <sub>2</sub> O/L	20.5 ± 7.9	18.4 ± 7.7	22.6 ± 6.9	0.687
Elastance of lung, cmH <sub>2</sub> O/L	12.9 ± 5.2	15.3 ± 7.7	15.3 ± 7.0	0.846
End expiratory lung volume, mL	735 ± 187	803 ± 312	749 ± 213	0.900
Physiologic dead space fraction	0.54 ± 0.03	0.51 ± 0.07	0.49 ± 0.08	0.631
End-tidal CO <sub>2</sub> /PaCO <sub>2</sub>	1.06 ± 0.04	1.13 ± 0.09	1.19 ± 0.08	0.133
Extravascular lung water, mL	359 ± 79	359 ± 80	366 ± 117	0.949
Wet/dry ratio	6.2 ± 7.0	5.8 ± 0.5	5.6 ± 0.6	0.629

Table 3 shows functional lung parameters in the donor and recipient animals. 'Before procurement' refers to data taken at the end the donation process at the time of lung procurement, except for wet-to-dry ratio that was measured in sham-operated animals. *BD* refers to data taken at the end of donor management; 'After reperfusion' refers to data taken at the end of post-reperfusion follow-up. Oxygenation of the implanted lung (After reperfusion, *n* = 3) was assessed by selective left pulmonary vein blood gas analysis. Data are presented as mean ± standard deviation. One-way ANOVA. *P* < 0.05 accepted as significant.

Ischemia, or Graft, while the expression of SELE was significantly higher at Graft (*P* < 0.05, panel C).

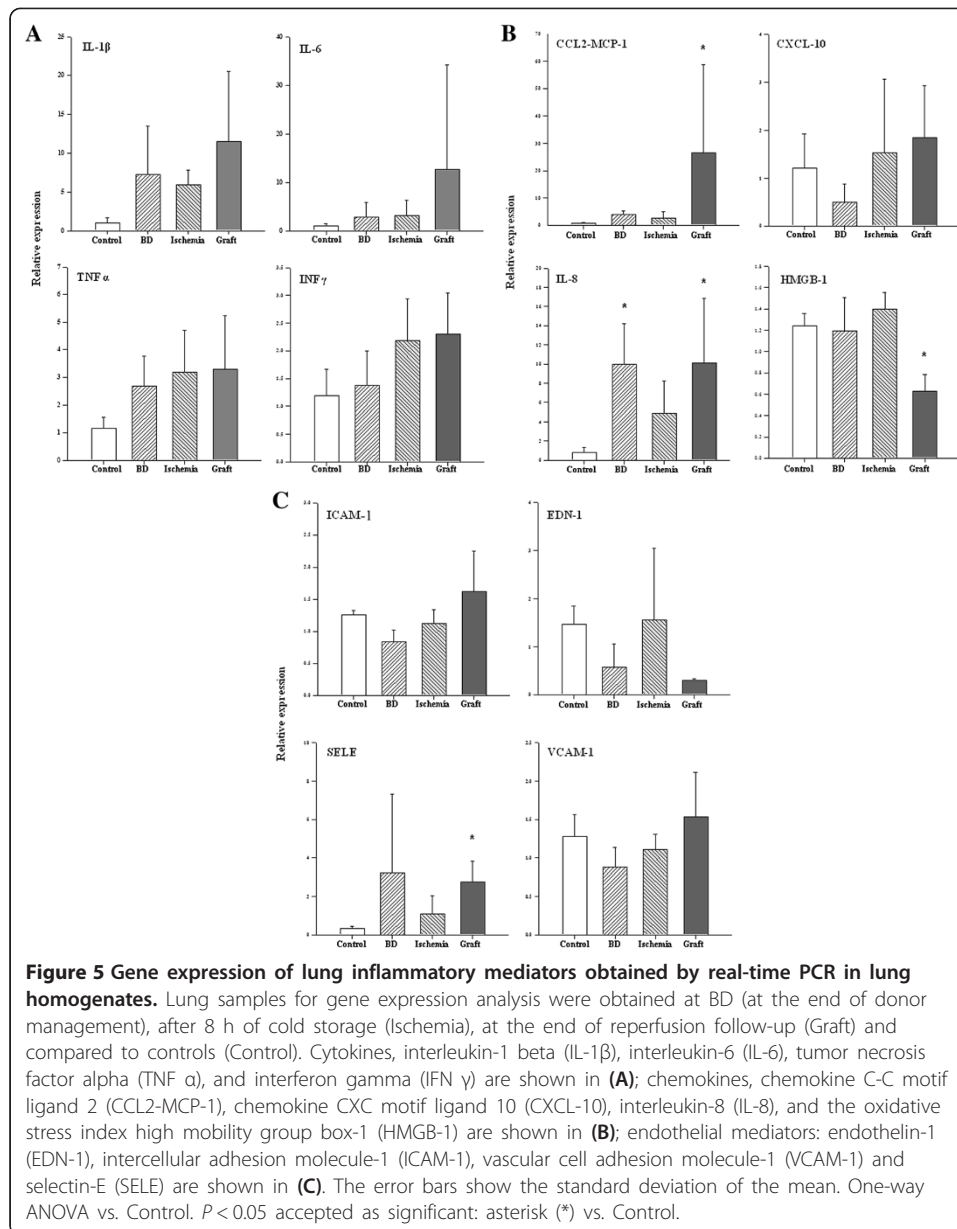
## Discussion

This study describes a pig model of brain death, donor management, and lung transplantation that closely resembles clinical conditions. The research effort was to reproduce each critical phase of donation and transplantation in a standardized and optimized fashion and to integrate the clinical approach with biofunctional evidence of lung injury.

Apart from decapitation [29] and cerebral hemorrhage [30], most of the animal investigations on brain death have utilized models of sovratentorial mass expansion to rise ICP [26,31-36]. While Neyrinck et al. and Ryan et al. induced brain death by an explosive rise of ICP [34,35], we elected to rise ICP slowly reproducing the protocol recently described by Purins et al. [15]. The model we used resembles that of a progressively expanding mass that brings to complete ischemia. Despite the specific limitations of an animal model, it could resemble an ICP rise that would occur in case of an untreated trauma or a spontaneous cerebral hemorrhage.

Increased intracranial pressure was associated with a decrease in CPP and a drop of intracranial compliance. Similarly to Purins et al., ICP rise was associated with a transient hypertension and tachycardia, followed by severe hypotension. These phenomena occurred at CPP values similar to those recently described in a refinement paper of Purins et al. [33], further confirming the validity of the model. In our model, clinical signs of brain death were evident after 1 h of negative CPP in all animals, including assessment of corneal reflex, coughing in response to tracheal suctioning and execution of an apnea test. Moreover, in a subset of animals, the absence of brain perfusion was confirmed by electroencephalography.

Intracranial pressure and CPP were maintained for an extended number of hours to better reproduce the clinical setting. This is a major distinction relative to previous investigations. Indeed, observation times after brain death were 120 min in Purins' research [15], 300 in Neyrinck [34]; 360 in Lyons [31], McLean [32], and Barklin [26],



and 480 in Hvas [30]. We prolonged the time from brain death to lung harvested after a total of 540 min after cerebral mass expansion. Even if this time was not as long as that of the investigation of Stieger et al.'s [37], this protracted period allowed to confirm brain death over time and opened to the long-term pathophysiological *sequelae* of brain death adding to the clinical relevance of the model. In fact, typical cardiovascular, metabolic, and electrolyte derangements of brain death overtly occurred. A distinctive feature of this study is that we treated brain death according to standard clinical practice adopting well-accepted physiological targets [17,18], whereas others did not [34,36]. In fact, after brain death induction, there was cardiovascular instability, including a progressive drop of systemic vascular resistance and a rise of cardiac output that required vasoactive drugs and a positive fluid balance for normalization. To optimize ventilatory management, a lung-protective ventilatory bundle of treatment was adopted

comprehensive of high PEEP - low tidal volume, apnea test execution during continuous positive airway pressure - CPAP, and lung recruitment maneuvers. As shown by Mascia et al. [23], this strategy likely contributed to prevent lung collapse and allowed to meet standard inclusion criteria for lung donation in all animals: mean PaO<sub>2</sub>/FiO<sub>2</sub> at PEEP 5 cmH<sub>2</sub>O and FiO<sub>2</sub> 100% was 480 ± 31 mmHg, well above the conventional threshold for acceptability set at 300 mmHg [2,38]. Overall, management of pigs after brain death closely mimicked the clinical challenge of treating the multi-organ donors, thus offering a standardized point of reference.

While previous research has generally focused attention on either the donor or the recipient side, we have accurately reproduced the entire process of organ donation and transplantation. After brain death induction and donor treatment, the lungs were retrieved and cold-stored for 8 h. This time interval represents a realistic frame for potential lung preservation and/or reconditioning strategies. Similar to other investigations, we have then used a single lung transplantation procedure [39,40]. Lung function early after reperfusion has been carefully monitored, as reperfusion injury is generally considered an outcome measure in lung preservation studies [41]. For this reason, based on the known effects of perfusion and ventilation on ischemia-reperfusion lung injury [42,43], meticulous attention was given to the reperfusion protocol. The clamp on pulmonary artery was opened stepwise to allow progressive accommodation of blood flow in the newly reperfused lung vasculature and to limit as much as possible shear stress forces. This procedure also contributed to dilute residual unflushed organic acid accumulated within the lung during warm ischemia, possibly dumping the systemic effects of reperfusion. During the first minutes of reperfusion, the ventilatory component of reperfusion injury was completely abolished. Ventilation was in fact resumed only 15 min after reperfusion. At this time, attention was given to avoid ventilator-induced lung injury: a low volume - high PEEP strategy was adopted, recruitment maneuver was postponed, and residual atelectasis initially tolerated to avoid stress load to the endothelial-epithelial barrier likely to occur at high end-inspiratory lung volumes. While tolerating relative hypoxia, oxygen inspiratory fraction was kept in the low range to avoid oxidative stress [44]. These targets were only transiently set, and a full open lung strategy was resumed within 45 min. We adopted this strategy based on the opinion that a slow transition from ischemia to reperfusion is of primary importance to modulate both endothelial and epithelial ischemia-reperfusion injury in the lung.

Careful titration of pre-load indexes and ventilation settings was also adopted during post-reperfusion follow-up. This allowed to terminate the experiments with the implanted lung free of edema, as assessed by wet-to-dry lung ratio, and with normal extravascular lung water and oxygenation indexes. While other assessed the function of the implanted lung by blood gas analysis after ligation of the contralateral pulmonary artery, we implemented a different strategy. Indeed, the stress test given by the entire cardiac output flowing through a recently ischemic lung is certainly useful to reveal a possible frailty of the implanted lung. However, such evaluation protocol imposes an unnatural hemodynamic challenge to both pulmonary vasculature and right heart that often leads to severe hemodynamic failure. There are in fact authors that report death at reperfusion, early after contralateral pulmonary artery ligation [45-47]. We believe that selective lung arterial and venous blood gas analysis accurately assess lung function without hemodynamic confounding factors. A limitation of this approach is that measures of respiratory mechanics reflect both native lung and graft. However, avoidance

of the stress hemodynamic test allowed to better investigate the biology of ischemia-reperfusion lung injury.

In this perspective, it is interesting to note that even if all efforts to gently treat the lungs were adopted and physiological endpoints were successfully pursued during donor treatment and after transplantation, there was a clear activation of inflammation in the lung [48,49]. In a clinical setting, achievement of these physiological parameters at the end of donor or recipient treatment would be certainly satisfactory. However, in spite of this excellent clinical outcome, enhanced expression of the chemokines CCL2-MCP-1 and IL-8 as well as increased transcription of SELE at different phases of the transplantation process suggest the presence of an inflammatory reaction [50]. Of particular interest, increased expression of IL-8 occurred during donor management. This observation confirms the idea that brain death per se induces inflammation in peripheral organs [51,52]. Indeed, increased production of the neutrophil chemoattractant IL-8 after brain death can facilitate subsequent reperfusion injury. In addition, increased chemokine production at the Graft point can promote rejection. Of note, our reperfusion strategy protected against oxidative injury, as suggested by HMGB-1 downregulation [53,54].

Mascia et al. showed that a conventional strategy of lung management during brain death was associated with a rise of plasma cytokines over time, while a protective strategy was not [23]. Here, we show that a lung-protective ventilation throughout brain death donor management and transplantation did not prevent the activation of inflammation in the lung. Both findings underscore the complexity of the interaction between ischemia-reperfusion and mechanical ventilation in lung transplantation and call to the need for reliable models that reproduce each phase of lung donation and transplantation. In fact, an increasing number of transplantations are performed with lungs from marginal donors, and the complex clinical settings often preclude full understanding of new treatment modalities cause-effect relationships.

There are some limitations to the study. In fact, the model resembles that of a progressively expanding mass that brings to complete ischemia, but only under the specific limitations of an animal model. The model is reproducible and with low variability, yet some differences between animals are present (see atrial fibrillation that occurred in three animals, for instance). The animals investigated are enough to conclude about the validity of the model, but we realize that the absolute number is low, with some reflections to statistical results.

## Conclusions

In conclusion, we have set a pig model that closely resembles the entire process of organ donation and lung transplantation, and we have shown that activation of inflammation in the lung was present despite of an optimized ventilatory management throughout the protocol. The findings of our investigation may represent a starting point for various studies of lung transplantation in a standardized setting.

## Additional files

**Additional file 1: Supplement.** A more detailed description of the section 'Methods' of this experimental work may be found in this Additional file.

**Additional file 2: Figure S1.** Representative diagram of the site of brain catheters placement.

**Additional file 3: Figure S2.** Radiograph of the epidural Foley catheter once inflated in the cranium of the pig.

**Additional file 4: Figure S3.** Photograph showing brain to inflated balloon proportions.

**Additional file 5: Figure S4.** Representative pattern of electroencephalographic activity before (upper panel) and after brain death induction (lower panel).

**Additional file 6: Table S1.** Controlled reperfusion parameters.

### Abbreviations

BD: the end of donor management after brain death; BUN: blood urea nitrogen; CCL2-MCP-1: chemokine CC motif ligand-2; CXCL-10: chemokine CXC motif ligand-10; CPP: cerebral perfusion pressure; CT: computed tomography; CVP: central venous pressure; EDN-1: endothelin-1; EELV: end-expiratory lung volume; EVLW: extravascular lung water; EtCO<sub>2</sub>: end tidal carbon dioxide; FiO<sub>2</sub>: inspiratory fraction of oxygen; GEDV: global end diastolic volume; HMGB-1: high mobility group box-1; IC: intracranial compliance; ICAM-1: intercellular adhesion molecule-1; ICP: intracranial pressure; IL-1 $\beta$ : interleukin-1 beta; IL-6: interleukin-6; IFN $\gamma$ : interferon gamma; IL-8: interleukin-8; MAP: mean arterial pressure; OI: oxygenation index; PaO<sub>2</sub>: partial arterial pressure of oxygen; pCO<sub>2</sub>: partial pressure of carbon dioxide; PCR: polymerase chain reaction; PEEP: positive end-expiratory pressure; SpO<sub>2</sub>: peripheral saturation of hemoglobin with oxygen; SELE: selectin-E; SVV: stroke volume variation; TNF $\alpha$ : tumor necrosis factor alpha; VCAM-1: vascular cell adhesion molecule-1; VD/VT: dead volume to tidal volume ratio - physiological dead space; W/D: wet-to-dry ratio.

### Competing interests

The authors of this manuscript have no conflict of interest to disclose.

### Authors' contributions

FG and LG conceived and designed the experiments. FV, SC, SF, GMR, JF, AV, LR, PM, GC, and SG performed the experiments. FV, SC, SF, NS, and GMR analyzed the data. CL, AC, and PL contributed to PCR analysis. FV, SC, SF, and LG wrote the paper. All authors read and approved the final manuscript.

### Acknowledgments

The authors thank Fabio Ambrosetti for his valuable technical support, Anna Catania for extensive review of the manuscript, Gianluca Ardolino and Alberto Facchini for assistance on electroencephalographic measurements, and all the nurses of the lung transplantation unit of the Fondazione IRCCS Ca' Granda who participated in the experiments. The authors also thank Luciano Lombardi for his technical assistance on CT scan brain imaging analysis. This study was funded by Fondazione IRCCS Ca' Granda - Ospedale Maggiore Policlinico, Milan, Italy.

### Author details

<sup>1</sup>Dipartimento di Anestesia Rianimazione (Intensiva e Subintensiva) e Terapia del dolore, Fondazione IRCCS Ca' Granda-Ospedale Maggiore Policlinico, Milan 20122, Italy. <sup>2</sup>Dipartimento di Fisiopatologia Medico-Chirurgica e dei Trapianti, Università degli Studi di Milano, Milan 20122, Italy. <sup>3</sup>Unità Operativa di Chirurgia Toracica, Fondazione IRCCS Ca' Granda-Ospedale Maggiore Policlinico, Milan 20122, Italy. <sup>4</sup>Unità Operativa Trapianti di Fegato, Fondazione IRCCS Ca' Granda-Ospedale Maggiore Policlinico, Milan 20122, Italy. <sup>5</sup>Centro di Ricerche Chirurgiche Precliniche, Fondazione IRCCS Ca' Granda-Ospedale Maggiore Policlinico, Università degli Studi di Milano, Milan 20122, Italy.

Received: 6 December 2013 Accepted: 5 February 2014

Published: 10 June 2014

### References

1. Botha P, Trivedi D, Weir CJ, Searl CP, Corris PA, Dark JH, Schueler SV (2006) Extended donor criteria in lung transplantation: impact on organ allocation. *J Thorac Cardiovasc Surg* 131:1154–1160
2. Kotloff RM, Thabut G (2011) Lung transplantation. *Am J Respir Crit Care Med* 184:159–171
3. Steen S, Liao Q, Wierup PN, Bolys R, Pierre L, Sjöberg T (2003) Transplantation of lungs from non-heart-beating donors after functional assessment ex vivo. *Ann Thorac Surg* 76:244–252
4. Egan TM, Haightcock JA, Nicotra WA, Koukoulis G, Inokawa H, Sevala M, Molina PL, Funkhouser WK, Mattice BJ (2006) Ex vivo evaluation of human lungs for transplant suitability. *Ann Thorac Surg* 81:1205–1213
5. Cypel M, Yeung JC, Hirayama S, Rubacha M, Fischer S, Anraku M, Sato M, Harwood S, Pierre A, Waddell TK, de Perrot M, Liu M, Keshavjee S (2008) Technique for prolonged normothermic ex vivo lung perfusion. *J Heart Lung Transplant* 27:1319–1325
6. Inci I, Zhai W, Arni S, Inci D, Hillinger S, Lardinois D, Vogt P, Weder W (2007) Fibrinolytic treatment improves the quality of lungs retrieved from non-heart-beating donors. *J Heart Lung Transplant* 26:1054–1060
7. Valenza F, Rosso L, Coppola S, Froio S, Colombo J, Dossi R, Fumagalli J, Salice V, Pizzocri M, Conte G, Gatti S, Santambrogio L, Gattinoni L (2012) Beta-adrenergic agonist infusion during extracorporeal lung perfusion: effects on glucose concentration in the perfusion fluid and on lung function. *J Heart Lung Transplant* 31:524–530
8. Yeung JC, Wagnetz D, Cypel M, Rubacha M, Koike T, Chun YM, Hu J, Waddell TK, Hwang DM, Liu M, Keshavjee S (2012) Ex vivo adenoviral vector gene delivery results in decreased vector-associated inflammation pre- and post-lung transplantation in the pig. *Mol Ther* 20:1204–1211
9. Lee JW, Gupta N, Serikov V, Matthay MA (2009) Potential application of mesenchymal stem cells in acute lung injury. *Expert Opin Biol Ther* 9:1259–1270
10. Ingemansson R, Eijolfsson A, Mared L, Pierre L, Algotsson L, Ekmechag B, Gustafsson R, Johnsson P, Koul B, Lindstedt S, Lührs C, Sjöberg T, Steen S (2009) Clinical transplantation of initially rejected donor lungs after reconditioning ex vivo. *Ann Thorac Surg* 87:255–260



11. Cypel M, Yeung JC, Liu M, Anraku M, Chen F, Karolak W, Sato M, Laratta J, Azad S, Madonik M, Chow CW, Chaparro C, Hutcheon M, Singer LG, Slutsky AS, Yasufuku K, de Perrot M, Pierre AF, Waddell TK, Keshavjee S (2011) Normothermic ex vivo lung perfusion in clinical lung transplantation. *N Engl J Med* 364:1431–1440
12. Valenza F, Rosso L, Gatti S, Coppola S, Froio S, Colombo J, Dossi R, Pizzocri M, Salice V, Nosotti M, Reggiani P, Tosi D, Palleschi A, Pappalettera M, Ferrero S, Perazzoli A, Costantini D, Scalamogna M, Rossi G, Colombo C, Santambrogio L, Gattinoni L (2012) Extracorporeal lung perfusion and ventilation to improve donor lung function and increase the number of organs available for transplantation. *Transplant Proc* 44:1826–1829
13. Aigner C, Slama A, Hotzenecker K, Scheed A, Urbaneck B, Schmid W, Nierscher FJ, Lang G, Klepetko W (2012) Clinical ex vivo lung perfusion—pushing the limits. *Am J Transplant* 12:1839–1847
14. Wallinder A, Ricksten SE, Hansson C, Riise GC, Silverborn M, Liden H, Olausson M, Dellgren G (2012) Transplantation of initially rejected donor lungs after ex vivo lung perfusion. *J Thorac Cardiovasc Surg* 144:1222–1228
15. Purins K, Sedigh A, Molnar C, Jansson L, Korsgren O, Lorant T, Tufveson G, Wennberg L, Wiklund L, Lewén A, Enblad P (2011) Standardized experimental brain death model for studies of intracranial dynamics, organ preservation, and organ transplantation in the pig. *Crit Care Med* 39:512–517
16. Weenink RP, Vrijdag XC, van Putten MJ, Hollmann MW, Stevens MF, van Gulik TM, van Hulst RA (2012) Quantitative electroencephalography in a swine model of cerebral arterial gas embolism. *Clin Neurophysiol* 123:411–417
17. McKeown DW, Bonser RS, Kellum JA (2012) Management of the heartbeating brain-dead organ donor. *Br J Anaesth* 108(Suppl 1):i96–i107
18. Wood KE, Becker BN, McCartney JG, D'Alessandro AM, Coursin DB (2004) Care of the potential organ donor. *N Engl J Med* 351:2730–2739
19. Powner DJ, Hendrich A, Lagler RG, Ng RH, Madden RL (1990) Hormonal changes in brain dead patients. *Crit Care Med* 18:702–708
20. Randell TT, Hockerstedt KA (1992) Triiodothyronine treatment in brain-dead multiorgan donors—a controlled study. *Transplantation* 54:736–738
21. Goarin JP, Cohen S, Riou B, Jacquens Y, Guesde R, Le Bret F, Aurengo A, Coriat P (1996) The effects of triiodothyronine on hemodynamic status and cardiac function in potential heart donors. *Anesth Analg* 83:41–47
22. Salim A, Vassiliu P, Velmahos GC, Sava J, Murray JA, Belzberg H, Asensio JA, Demetriades D (2001) The role of thyroid hormone administration in potential organ donors. *Arch Surg* 136:1377–1380
23. Mascia L, Pasero D, Slutsky AS, Arguis MJ, Bernardino M, Grasso S, Munari M, Boifava S, Cornara G, Della Corte F, Vivaldi N, Malacarne P, Del Gaudio P, Livigni S, Zavala E, Filippini C, Martin EL, Donadio PP, Mastrotauro I, Ranieri VM (2010) Effect of a lung protective strategy for organ donors on eligibility and availability of lungs for transplantation: a randomized controlled trial. *JAMA* 304:2620–2627
24. Douglas CG (1911) A method for determining the total respiratory exchange in man. *J Physiol* 42:17–18
25. Meneely GR, Kaltreider NL (1949) The volume of the lung determined by helium dilution; description of the method and comparison with other procedures. *J Clin Invest* 28:129–139
26. Barklin A, Larsson A, Vestergaard C, Koefoed-Nielsen J, Bach A, Nyboe R, Wogensen L, Tønnesen E (2008) Does brain death induce a pro-inflammatory response at the organ level in a porcine model? *Acta Anaesthesiol Scand* 52:621–627
27. Ray M, Dharmarajan S, Freudenberg J, Zhang W, Patterson GA (2007) Expression profiling of human donor lungs to understand primary graft dysfunction after lung transplantation. *Am J Transplant* 7:2396–2405
28. Pennefather SH, Bullock RE, Mantle D, Dark JH (1995) Use of low dose arginine vasopressin to support brain-dead organ donors. *Transplantation* 59:58–62
29. Steen S, Sjoberg T, Liao Q, Bozovic G, Wohlfart B (2012) Pharmacological normalization of circulation after acute brain death. *Acta Anaesthesiol Scand* 56:1006–1012
30. Hvas CL, Nielsen TK, Barklin A, Sørensen JC, Pedersen M, Andersen G, Tønnesen E (2012) Brain death induced by cerebral haemorrhage – a new porcine model evaluated by CT angiography. *Acta Anaesthesiol Scand* 56:995–1005
31. Lyons JM, Pearl JM, McLean KM, Akhter SA, Wagner CJ, Pandalai PK, Duffy JY (2005) Glucocorticoid administration reduces cardiac dysfunction after brain death in pigs. *J Heart Lung Transplant* 24:2249–2254
32. McLean KM, Duffy JY, Pandalai PK, Lyons JM, Bulcao CF, Wagner CJ, Akhter SA, Pearl JM (2007) Glucocorticoids alter the balance between pro- and anti-inflammatory mediators in the myocardium in a porcine model of brain death. *J Heart Lung Transplant* 26:78–84
33. Purins K, Enblad P, Wiklund L, Lewén A (2012) Brain tissue oxygenation and cerebral perfusion pressure thresholds of ischemia in a standardized pig brain death model. *Neurocrit Care* 16:462–469
34. Neyrinck AP, Van De WC, Geudens N, Rega FR, Verleden GM, Wouters P, Lerut TE, Van Raemdonck DE (2006) Comparative study of donor lung injury in heart-beating versus non-heart-beating donors. *Eur J Cardiothorac Surg* 30:628–636
35. Ryan JB, Hicks M, Cropper JR, Garlick SR, Kesteven SH, Wilson MK, Feneley MP, Macdonald PS (2003) Functional evidence of reversible ischemic injury immediately after the sympathetic storm associated with experimental brain death. *J Heart Lung Transplant* 22:922–928
36. Mertes PM, el Abassi K, Jaboin Y, Burtin P, Pinelli G, Carreaux JP, Burtel C, Boulange M, Villemot JP (1994) Changes in hemodynamic and metabolic parameters following induced brain death in the pig. *Transplantation* 58:414–418
37. Stiegler P, Sereinigg M, Puntschart A, Bradatsch A, Seifert-Held T, Wiederstein-Grasser I, Leber B, Stadelmeyer E, Dandachi N, Zelzer S, Iberer F, Stadlbauer V (2013) Oxidative stress and apoptosis in a pig model of brain death (BD) and living donation (LD). *J Transl Med* 11:244–256
38. Van Raemdonck D, Neyrinck A, Verleden GM, Dupont L, Coosemans W, Decaluwé H, Decker G, De Leyn P, Naftaux P, Lerut T (2009) Lung donor selection and management. *Proc Am Thorac Soc* 6:28–38
39. Lehmann S, Barten MJ, Topf C, Garbade J, Dhein S, Mohr FW, Bittner HB (2012) Donor type impact on ischemia-reperfusion injury after lung transplantation. *Ann Thorac Surg* 93:913–919

40. Saenz A, Alvarez L, Santos M, López-Sánchez A, Castillo-Olivares JL, Varela A, Segal R, Casals C (2011) Beneficial effects of synthetic KL(4) surfactant in experimental lung transplantation. *Eur Respir J* 37:925–932
41. de Perrot M, Keshavjee S (2004) Lung preservation. *Semin Thorac Cardiovasc Surg* 16:300–308
42. de Perrot M, Liu M, Waddell TK, Keshavjee S (2003) Ischemia-reperfusion-induced lung injury. *Am J Respir Crit Care Med* 167:490–511
43. Valenza F, Ruggeri GM, Froio S, Coppola S (2012) Old and new strategies to preserve the lung before transplantation. *Organs Tissues Cells* 15:109–114
44. Diamond JM, Lee JC, Kawut SM, Shah RJ, Localio AR, Bellamy SL, Lederer DJ, Cantu E, Kohl BA, Lama VN, Bhorade SM, Crespo M, Demissie E, Sonett J, Wille K, Orens J, Shah AS, Weinacker A, Arcasoy S, Shah PD, Wilkes DS, Ware LB, Palmer SM, Christie JD, Lung Transplant Outcomes Group (2013) Clinical risk factors for primary graft dysfunction after lung transplantation. *Am J Respir Crit Care Med* 187:527–534
45. Wittwer T, Franke UF, Fehrenbach A, Ochs M, Sandhaus T, Schuette A, Richter S, Dreyer N, Knudsen L, Müller T, Schubert H, Richter J, Wahlers T (2005) Experimental lung transplantation: impact of preservation solution and route of delivery. *J Heart Lung Transplant* 24:1081–1090
46. Inci I, Erne B, Arni S, Jungraithmayr W, Inci D, Hillinger S, Vogt P, Leskosek B, Weder W (2010) Prevention of primary graft dysfunction in lung transplantation by N-acetylcysteine after prolonged cold ischemia. *J Heart Lung Transplant* 29:1293–1301
47. Van De WC, Neyrinck A, Geudens N, Rega F, Verleden GM, Lerut T, Van Raemdonck D (2006) Modification of the arterial anastomotic technique improves survival in porcine single lung transplant model. *Acta Chir Belg* 106:450–457
48. Avlonitis VS, Wigfield CH, Kirby JA, Dark JH (2005) The hemodynamic mechanisms of lung injury and systemic inflammatory response following brain death in the transplant donor. *Am J Transplant* 5:684–693
49. Fisher AJ, Donnelly SC, Hirani N, Burdick MD, Strieter RM, Dark JH, Corris PA (1999) Enhanced pulmonary inflammation in organ donors following fatal non-traumatic brain injury. *Lancet* 353:1412–1413
50. Fisher AJ, Donnelly SC, Hirani N, Haslett C, Strieter RM, Dark JH, Corris PA (2001) Elevated levels of interleukin-8 in donor lungs is associated with early graft failure after lung transplantation. *Am J Respir Crit Care Med* 163:259–265
51. Catania A, Lonati C, Sordi A, Gatti S (2009) Detrimental consequences of brain injury on peripheral cells. *Brain Behav Immun* 23:877–884
52. Avlonitis VS, Fisher AJ, Kirby JA, Dark JH (2003) Pulmonary transplantation: the role of brain death in donor lung injury. *Transplantation* 75:1928–1933
53. Tang D, Kang R, Zeh HJ III, Lotze MT (2011) High-mobility group box 1, oxidative stress, and disease. *Antioxid Redox Signal* 14:1315–1335
54. Rong J, Ye S, Wu ZK, Chen GX, Liang MY, Liu H, Zhang JX, Huang WM (2011) Controlled oxygen reperfusion protects the lung against early ischemia-reperfusion injury in cardiopulmonary bypasses by downregulating high mobility group box 1. *Exp Lung Res* 38:183–191

doi:10.1186/2197-425X-2-12

**Cite this article as:** Valenza et al.: A standardized model of brain death, donor treatment, and lung transplantation for studies on organ preservation and reconditioning. *Intensive Care Medicine Experimental* 2014 2:12.

**Submit your manuscript to a SpringerOpen<sup>®</sup> journal and benefit from:**

- Convenient online submission
- Rigorous peer review
- Immediate publication on acceptance
- Open access: articles freely available online
- High visibility within the field
- Retaining the copyright to your article

---

Submit your next manuscript at ► [springeropen.com](http://springeropen.com)

---